

# Waltham Historical Society

## “Murder in Massachusetts—It’s Written in Stone”

### History in the Graveyard



Markers in Grove Hill Cemetery

Join us as Tom and Brenda Malloy bring reports of their studies to the Waltham Historical Society.

In many cases epitaphs that document the cause of death as murder also noted the perpetrator(s) of the crime. The underlying theory is that the authors of murder epitaphs were ensuring that those responsible for such a horrific act would have their names literally “written in stone.” This thesis will be demonstrated in a slide presentation of late 18th and early 19th century Massachusetts gravestones that document murder.

Tom Malloy is a professor emeritus of American History from Mount Wachusett Community College in Gardner, Massachusetts. He is currently the vice president of the Association for Gravestone Studies Board of Trustees and also president-elect of The Gardner Museum, Gardner, MA.

Brenda Malloy is a retired fifth grade teacher from Westminister, Massachusetts and is a

former member of the Association for Gravestone Studies Board of Trustees.

Both have presented a number of scholarly papers on cemeteries and grave markers at annual meetings of the Association for Gravestone Studies and the American Culture Association. Articles by them appear in *Markers IX*, *Markers XI*, *Markers XIV*, *Markers XVI* and *Markers XXI*.

The meeting of the Society is scheduled for Sunday, November 21, 2004 at the Waltham Public Library Lecture Hall beginning at 2:00 pm.

Contact Sheila FitzPatrick 781-894-0062 for further information.

#### Board of Directors 2003-2005

Co-Presidents:  
Sheila E. FitzPatrick  
Wayne T. McCarthy

Treasurer:  
John W. Cox

Assistant Treasurer:  
Vacant

Recording Secretary:  
Barbara Maloney

Corresponding Secretary:  
Edna L. Dolber

Curator:  
Joan M. Sheridan

Assistant Curator:  
Winifred W. Kneisel

#### Board Members

- Ruth M. Arena
- Marie Daly
- Louise Hamilton
- Lucille M. Hanna
- Virginia Hays
- Jean M. Husson
- Frank Maloney
- Lill Movsessian
- Lou Nocera
- Jean S. Salvucci
- David L. Smith

#### Inside this issue:

<i>Charles H. Metz</i>	2
<i>House Tour '05</i>	3
<i>Waltham International</i>	3
<i>The Fernald School II</i>	4

#### Recent Correspondence

Recently we have received a number of inquiries through our web site. Mr. Harris Childs visited us in mid-October to look at the ledgers that were donated to the Society by Citizens Bank in Watertown.

Mr. Childs had seen the article in the newspaper and decided to contact us and see if he was able to add to the research he has been conducting on his family.

We also received a correspondence from Mr. Benjamin Dunkin Adams Jr. from Old Greenwich, CT.

Mr. Adams informed us that he and his mother and brother recently donated to the Houghton Library, much documentation concerning his ancestors and their time in Waltham.

Some of the material included sermons by Ezra Ripley, and correspondences used by Joan Goodwin in the Book *The Remarkable Mrs. Ripley*, which centers in Waltham.

Mr. Adams promises to do more research, and send along his findings.

On page 3 of this issue is another bit of correspondence we received from Waltham International SA in Switzerland.

These are just a sampling of our recent correspondences. Thank you to those who have contacted us, and we would like everyone to please continue to call, write, or email the Society.

## About this issue's featured story

The intent of The Waltham Historical Society's Newsletter is to provide information on historical, current, and upcoming events in which the Society is involved. We will also at-

tempt to include items of interest that are in the possession of the Society. As an example, the following text written by P. M. Stone to Mr. John J. Flynn, Esq. Found in our files, it gives

a bit of background information on a prominent citizen of Waltham in the years following the turn of the 20th century.

We hope you enjoy.

## Charles H. Metz

By P.M. Stone, 11 May, 1955

"Metz was a genius, though an erratic one, who flared like a comet across the Waltham Industrial horizon for 30 years and then faded to oblivion."

Metz was a genius, though an erratic one, who flared like a comet across the Waltham Industrial horizon for 30 years and then faded to oblivion. He finally left Waltham about 1922 and died in Glendale California: June 29, 1937.

For an account of his new factory on Rumford Avenue — WALTHAM MFG. CO., — see FREE PRESS at Library: March 7, 1894 (Daily) or March 9th in Weekly ed.)

There he manufactured the famous ORIENT bicycle which was looked upon as one of the finest wheels in America (particularly the 1897 model). Many new speed records were established at the WALTHAM BICYCLE PARK, on South Street by professional riders who favored the ORIENT bike.

Metz was mainly engaged in making bicycles here up to round 1900 when he settled for a time in Brockton, Mass. and became associated in a MOTOR BICYCLE enterprise (Phil Richardson, of Richardson Hardware store can give you some information on this phase of his career).

In 1911 Metz returned to Waltham and the entire community was amazed to learn that he was taking over the GORE estate on Lower Main Street; there he opened his offices in the mansion and later erected a factory for manufacture of low priced motor cars. On June 16-17-18, 1911 Metz staged on the GORE grounds the first elaborate airplane exhibition ever held in New England.

The METZ motor cars captured several endurance test prizes round 1912-1916 but gradually lost popularity and the business entered upon a steady decline. In 1921 (June) the GORE mansion was taken over by the newly organized Waltham Country Club and 2 years later the Metz factories were sold to meet claims of creditors.

### \*THE "ORITEN"

In the Summer of 1897 the famed TEN SEATER (Oriten) was made at the Metz factory on Rumford Avenue and later on it was exhibited throughout the nation; the first "BIKE" of its kind ever manufactured. It was "tried out" at the Waltham Park; also at Charles River race track. A full description of this unique machine (with sketch) appears in WALTHAM FREE PRESS TRIBUNE (Daily ed.) September 7, 1897, — also in NY TRIBUNE; May 24, 1942.

It featured 20 sprocket wheels, the largest being 16" and the smallest 6".

Weight: 305 lbs.

Length, hub to hub: 20' 8"

Overall 22' 9"

Diameter of wheels: 30"

Saddles: 22" apart

Tread: 5"

It was reported that the wheel was 6 weeks in the making and cost round \$1200.

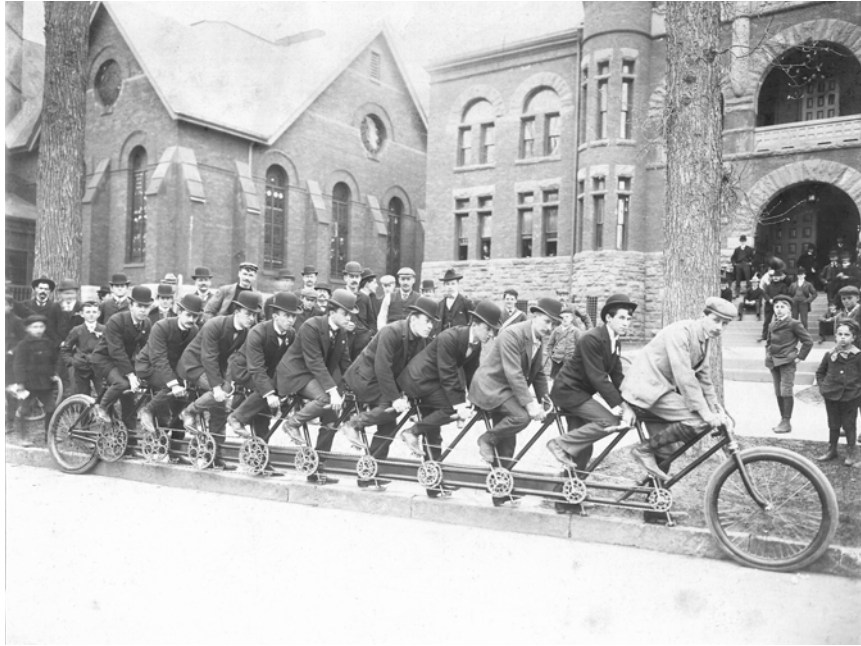
Listed among the ORITEN'S first riders were C.H. Metz; Frank Sullivan; C.H. Wolf; George Weeks; W. Tether; T. Theriault; C.J. Spiegelberg; C. H. West; John Beach and W. Parrot.

Charles H. Metz (continued)

\*(At last report, the "ORITEN" was on exhibit at the FORD MUSEUM in Dearborn, Michigan).

P.M. Stone

The photo at right was taken of an "ORITEN" in Utica, New York by one W.T. Grant.



**weight:**  
305 lbs.

**length:**  
22' 9"

**saddles:**  
22" apart



The Waltham Historical Society was recently contacted by Waltham International SA in Switzerland.

Their email informs us that they are the current rights holder for the Waltham trademark in all watch countries, with the exception of the USA and Canada.

Founded in Lausanne Switzerland in 1954 by Officials of the Waltham Watch Company, they have been manufacturing and distributing Waltham Watches since the demise of the original company.

Visit: [www.waltham.ch](http://www.waltham.ch). We will be linking our site to theirs in the near future.



## House Tour 2005

The 2005 Waltham House Tour is now scheduled for June 5, 2005.

As in years past, we will be in need of volunteers to help make 2005's event even more successful.

Jolene Fish and Joan Sheridan have volunteered to serve on the House Tour Committee, and look forward to increasing the number of homes available on our tour.

The House Tour is always a great opportunity to get a look inside some of

Waltham's most important homes and buildings.

If you are interested in opening your home for a tour, please contact Jolene Fish, Joan Sheridan, or Sheila FitzPatrick, and let them know. Our volunteers will then help guide you through the process.

Frank Maloney has graciously agreed to continue soliciting "Business Friends," for mention in our House Tour booklets, and if you can help out by selling a few ads, it will greatly increase our success.

Copies of the 2004 House Tour booklet are available for use as samples when calling upon local businesses for their support.

We will also be in need of dollars to greet visitors to each

home on the day of the tour. This is typically a very enjoyable part of the House Tour program. Get to meet some of your neighbors.

To get involved contact The Waltham Historical Society, 190 Moody Street, Waltham, MA 02453, 781-891-5815, email [waynemccarthy@rcn.com](mailto:waynemccarthy@rcn.com)

### 2004 Business Friends of the Waltham Historical Society

- |   |   |
|---|---|
| Albert's Photo Studio   | O'Toole Landscape, Inc.                 |
| Allegra Print and Imaging   | Marcou Jewelers                         |
| Brasco & Sons Memorial Chapels                                    | The Nelson Companies                    |
| Laura M. Cannon, Attorney at Law                                  | O'Toole the Florist, Inc.               |
| The Chateau Restaurant of Waltham, Inc.                           | Professional Hearing Aid Center         |
| Civil War Roundtable of Greater Boston                            | Reagle Players                          |
| Embassy Trophy Company  | Regan Management, LLC                   |
| Gordon's Liquors  | Rotary Club of Waltham, Serving Waltham |
| Historic B&W, Color Photos of Waltham & Vicinity by Frank Maloney | Sadies Saloon and Eatery                |
| Waltham West Suburban Chamber of Commerce                         | Stack Chiropractic Office               |
| James J. Hayes Oil Co., Inc.                                      | Waltham Land Trust, Inc.                |
| Joyce Funeral Home  | Watch City TV and Appliance             |
| J.P.I.  | Stewart Woodward, Visual Talent Group   |

# The Walter E. Fernald Development Center

Article contributed by Marie Daly  
Continued from the Fall edition

In addition to being incarcerated, abused, poorly educated and malnourished, many of the Fernald residents were unwitting participants in medical experiments, such as the "Science Club" children who were fed radioactive isotopes with their oatmeal. While the doses were probably too small to harm the children, they had not given their consent, and had been given disproportionately large rewards for their participation. Consequently, these experiments violated the Nuremberg Code, ethical principles for medical experimentation established after the Nazi Holocaust.

But the reports of the conditions of the 1950s do not reflect the current care. In 1972, parents, guardians and advocates for the disabled sued the Commonwealth in federal court. The judge ordered increased state funding, and better treatment of the disabled. As a result of federal court order, many residents were placed in community residential facilities, and the care of the remaining residents was vastly improved. A sprawling, one-storey cottage complex was built to provide more intimate and home-like residences for those who remained. By 1979, the number of residents had decreased to 1,161. The Fernald Center now houses 248 residents, the majority of whom are profoundly disabled.

Most of the nineteenth century buildings were designed by one architect, William G. Preston, who advocated a cottage concept laid out, not in a "checkerboard" fashion, but rather dispersed amid a largely preserved landscape of rolling hills. Preston designed many of the buildings in a Queen Anne style with Romanesque or Craftsman overtones. The buildings have fieldstone foundations, red brick construction, sandstone trim, corbelled cornices, overhanging slate roofs and decorative brickwork. In the 1930s, another architect, Clarence P. Hoyt designed buildings in the colonial revival style common to state institutions of that era. Since the 1950s, construction at the institution has possessed no architectural design of merit and has greatly disturbed the landscape. But with its tree-

lined parks and hilly landscape, the oldest part of the campus has the ambience of a New England village. Candace Jenkins, the state consultant who nominated the campus for the National Register of Historic Landmarks, said "The Walter E. Fernald State School possesses integrity of location, design, setting, materials, workmanship, feeling and associations."

## Sources

1. Samuel Gridley Howe, M. D., Class of 1821," Brown University website, [www.brown.edu/webmaster/about/history/howe.shtml](http://www.brown.edu/webmaster/about/history/howe.shtml).
2. Stan Griffin, Deaf Friends International, "Champion of the Unfortunate," [www.workersforjesus.com/dfi/854.htm](http://www.workersforjesus.com/dfi/854.htm). Biography of Samuel Gridley Howe.
3. Walter E. Fernald Historical Collection, Samuel Gridley Howe Library, [www.brandeis.edu/lemborg/SGHL/Main.html](http://www.brandeis.edu/lemborg/SGHL/Main.html)
4. David Pfeiffer, "Samuel Gridley Howe and 'Schools of the Feeble-minded,'" *Ragged Edge Online*, Jan./Feb. 2003, [www.ragged-edge-mag.com/0103/0103ft2.html](http://www.ragged-edge-mag.com/0103/0103ft2.html).
5. "State Hospitals of Massachusetts," *1856.org*, [www.1856.org/mass.html](http://www.1856.org/mass.html).
6. "Parallels in Time: A History of Developmental Disabilities," The Minnesota Governor's Council on Developmental Disabilities, [www.mncdd.org/parallels/](http://www.mncdd.org/parallels/).
7. Candace Jenkins, *Nomination for National Register of Historic Landmarks*. Massachusetts Historic Commission, 1992. A detailed description of the Fernald Center and its historic buildings. Available at the Waltham Public Library, Waltham Room.
8. "History of Massachusetts Institutions," *World Wide Web Virtual Library for Archaeology*, <http://archnet.asu.edu/archives/ccm/Mass/built/hs.htm>.
9. "Consolidated Consent Decrees Summary," *The Arc of Massachusetts website*, <http://arcmass.org/consent.pdf>. A summary of the 1993 federal court order regarding Massachusetts facilities for people with developmental disabilities.
10. Elof Axel Carlson. *The Unfit: A History of a Bad Idea*. New York: Cold Spring Harbor Press, 2001.
11. Michael D'Antonio, *The State Boys Rebellion: A True Story*. New York, Simon & Schuster, 2004. About children who were wards of the state and incarcerated at the Fernald School from the 1940s to 1970.
12. Stephen Jay Gould, *The Mismeasure of Man*. New York: W. W. Norton, 1981, 2<sup>nd</sup> ed. 1996. Now a classic rebuttal in the debate of aptitude testing, race, innate intelligence and environmental influence. Available at the Waltham Public Library.
13. Margaret Quigley, "The Roots of the I. Q. Debate: Eugenics and Social Control," *The Public Eye Website of the Political Research Associates*, [www.publiceye.org/magazine/v09n1/eugenics.html](http://www.publiceye.org/magazine/v09n1/eugenics.html). An online article about the political motivations of eugenics advocates.
14. Welling Savo, "The Master Race," *Boston Magazine*, Dec. 2002, available on line at [www.bostonmagazine.com/special1/eugenics\\_1202.shtml](http://www.bostonmagazine.com/special1/eugenics_1202.shtml).
15. "Race and Membership in American History: The Eugenics Movement," *Facing History and Ourselves website*, [www.facing.org](http://www.facing.org).

**Dorothy Slamin Hill  
and  
Donald Roche**

The Waltham Historical Society wishes to extend our deepest sympathies for their loss to the families of long time members Dorothy Slamin Hill and Donald Roche.