

The Official Newsletter of

The Waltham
Historical Society
WALTHAM, MASSACHUSETTS

NOVEMBER 2014



Sanderson Lecture Series

7:00 p.m., Tuesday Evening

NOVEMBER 18, 2014

RTN Federal Credit Union

600 Main Street

Waltham, MA 02453

Board of Directors
Term: 2013-2015

President
Wayne T. McCarthy

Vice-President
Sheila E. FitzPatrick

Treasurer
Mary Selig

Assistant Treasurer
Jack Cox

Recording Secretary
Janis Marchese

Corresponding Secretary
Edna Dolber

Curator
Vacant

Assistant Curator
Winifred W. Kneisel

Membership
Carol DiFranco

Board Members
Ruth M. Arena
Tim Close
Joseph Connors
Marie Daly
Dr. Helene Day
Denise Dube
Ron Guertin
Louise Hamilton
Susan Keefe
Morton Isaacson
Larry Logan
Lou Nocera
Joan M. Sheridan
David Smith

The Weathervane is an official publication of the Waltham Historical Society
190 Moody Street
Waltham, Massachusetts 02453
781-891-5815
www.walthamhistoricalsociety.org

© Copyright 2014, all rights reserved
Membership in the Waltham Historical Society includes subscription to this newsletter among other rights and privileges.

Articles and images submitted for publication, unless otherwise specified, become the property of the Waltham Historical Society. Authors submitting material for publication are requested to sign articles and include name, address, phone number, e-mail if any, and release to print images of any individuals depicted.

The Edmund L. Sanderson Lecture Series

Tuesday, November 18, 2014

The Hub's Metropolis: Greater Boston's Development From Railroad Suburbs to Smart Growth



James C. O'Connell

The Hub's Metropolis: Greater Boston's Development from Railroad Suburbs to Smart Growth (2013) is the first comprehensive historical overview of Boston's suburban development, from the earliest country estates to suburban sprawl and the smart growth movement. This book provides historical context for understanding the region's contemporary planning efforts that are addressing the

challenges of low-density sprawl, climate change, and the global information age economy.

The lecture will follow a brief Society meeting. As always seating is limited so please arrive promptly. Doors open at 6:45 and close at 7:15. Please call 617-448-6706 or email Waltham.historical.society@gmail.com with any questions. Light refreshments available.

About the lecturer

Jim O'Connell is a planner for the Boston Regional Office of the National Park Service. He has a B.A. from Bates College and an M.A. and Ph.D. in Urban History from the University of Chicago. He has written five books and many articles on planning and New England history. His books include Becoming Cape Cod: Creating a Seaside Resort and The Pioneer Valley Reader. Jim served as Economic Development Officer of the Cape Cod Commission and worked on urban redevelopment in Springfield, MA. He serves as chair of the Massachusetts Zoning Reform Working Group. He has taught Sustainable Communities in the Sustainable Design Program of the Boston Architectural College.



**The Hub’s Metropolis:
Greater Boston’s
Development from
Railroad Suburbs to
Smart Growth**

The book explains how each era of suburbanization produced a distinctive land use development pattern, which left its imprint on the landscape. Each period had particular characteristics related to the built landscape, transportation, real estate development patterns, housing styles, retail activity, and the treatment of open and public space. Transportation developments—the railroad, horse-drawn streetcar, electric streetcar, automobiles—have had a significant influence on the form of the metropolitan area, but each era has also been shaped by cultural attitudes about suburbs, the city, and social class.

The Hub’s Metropolis describes how Boston has been a national pace-setter for suburbanization, including country estates, railroad suburbs, streetcar suburbs, land use zoning, open space conservation, highway beltways, shopping centers, office parks, edge cities, and central city revitalization. The Hub’s Metropolis suggests sites to visit that are illustrative of development in each period of suburbanization.

*Images: The MIT Press
http://thinkingregionally.wordpress.com/*

**Eleven Periods of Boston’s
Metropolitan Development**

The Hub’s Metropolis examines 11 periods of Greater Boston’s metropolitan development:

- Traditional Village Centers and Proto-Suburbs (1800-1860)
- Country Retreats (1820-1920)
- Railroad Suburbs (1840-1920)
- Streetcar Suburbs (1870-1930)
- Metropolitan Parkway Suburbs (1895-1945)
- Mill Towns (1820-present)
- Postwar Automobile Suburbs (1945-1970)
- Boston Redefines the Center City (1945-present)
- Interstates, Exurbs, and Sprawl (1970-present)
- Smart Growth Era (1990-present)
- Future Trends: Climate Change and the Digital City

“A riveting history of one of the nation’s most livable places -- and a road map for how to keep it that way. James O’Connell’s wealth of knowledge about Greater Boston makes him the perfect guide for understanding this extraordinary metropolitan region, from celebrated urbanism to pastoral retreat.”

Anthony Flint
Fellow, Lincoln Institute of Land Policy

**The
Waltham
Historical Society
Fundraising
Committee
Needs YOU!!**

The Society Fund-raising Committee has brought forth some ideas that we hope will stimulate interest in Waltham’s history while aiding us in paying the bills.

Al and David Smith are looking into cemetery tours. Mayor McCarthy has suggested creating Waltham clocks with clock images from around the City. Sheila FitzPatrick mentioned putting out a series of postcards and puzzles. Louise Hamilton has put forth the idea of an art show that includes Waltham artists, both current and past.

Jack Cox has offered to conduct a History of Waltham class next summer that will offer his highly popular high school studies to adults.

Other ideas include grant writing, educational outreach, and collaborations with other local non-profit groups.

If you’re interested in getting involved, or you can help provide services to any of these ideas please contact us at Waltham.historical.society@gmail.com or 617-448-6706. We would love to hear from you.

Become a Board Member

The Nominating Committee is seeking recruits to serve on the Board of the Historical Society. If you are interested in becoming more involved and helping make decisions on the Society’s future please contact Joan Sheridan or Carol DiFranco, call us at 617-448-6706, or Waltham.historical.society@gmail.com.

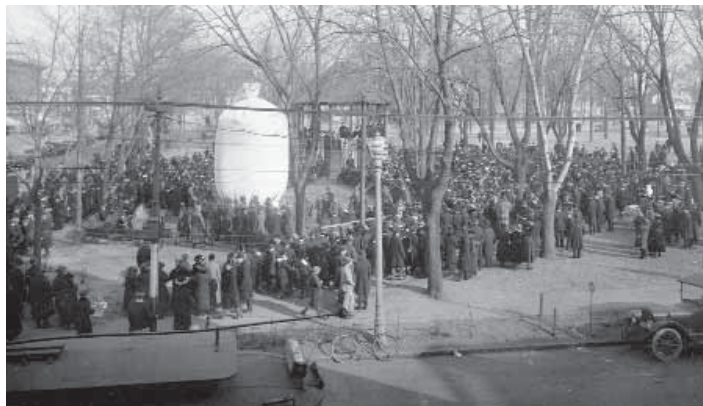


Display Case at the Library For November 2014

The Waltham Historical Society is exhibiting at the Waltham Public Library for the month of November. With the 100th Anniversary of the start of World War I we thought it appropriate to showcase a few images from our collection related to Waltham's part in the Great War.

Images showing the original War Monument once situated on the Common as well as snapshots of Camp Banks where members of Waltham's contingent drilled are prominently displayed. A number of images show new recruits posing in front of the Waltham Public Library as they prepared to leave for training and the front. Many of the images are identified and you may see some familiar names listed.

Another piece of the display is a letter from Pvt. Charles J. Rennie. The letter was sent from "somewhere in France" in the early part of 1918. The letter arrived just prior to the Flag Raising Ceremony held on the Training Field (now Lowell Field, corner of Willow and Grove Sts.) in July 1918. The letter was read to the audience at the event. Charles Rennie was killed in action in October of 1918, just days before the Armistice was signed.



Visitors to Camp Banks

Dedication of the original War Memorial to those who served in World War I.



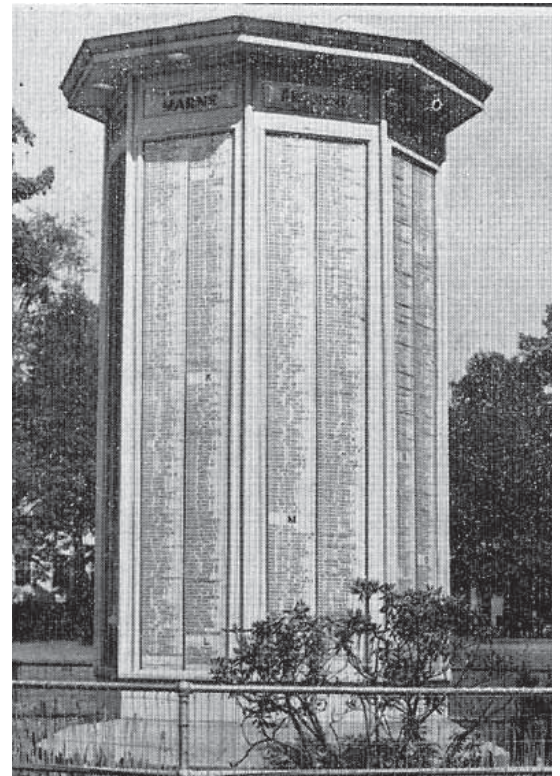
Kappa Sigma Community Service members meet the Mayor

Left to right: Andrew Scopes, Kartik Devineni, Andres Valdivia, Mayor McCarthy, Jake Levine, Chris Dodge, Jason Poon

The Bentley University Kappa Sigma fraternity visited City Hall recently and met with Mayor Jeannette McCarthy. The fraternity brothers have become famous as a result of their activities in support of local community initiatives. From support of the Waltham Day on the Common, the Land Trust 5K Road Race, and the Waltham Historical Society, these fine young men have been extremely responsible and accommodating.

If you have a chance to visit the exhibit we'd love to hear your comments and suggestions. All of the images in the display are available for purchase from the Society should you find an ancestor or relative depicted.

The Society has a large collection of similar images and only a select few have been chosen to be included in this display.



The original Memorial to World War I veterans.



A howitzer captured at the Battle of the Marne in July of 1918.

The Board of Directors of the Waltham Historical Society wishes to express our appreciation for the support of the individuals and organizations listed on this page. They have been very generous to the Historical Society this past year and we encourage you to thank them for their generosity by patronizing the businesses identified, and by expressing thanks to the individuals. Without this type of support the Society would be unable to continue our work in the community.

Ruth M. Arena
Henry & Patricia Burke
Louise Butler
Robert Charbonneau & Family
Historical Commission
Jack Cox
Gail & Marion Cormier
Angie Emberley
Tom Emberley
Sheila FitzPatrick
Joyce Gianfelice
Ron Guertin
Beth Guertin
Louise Hamilton
Marjorie F. Hartman
Virginia C. Hays
Jean M. Husson
Mort Isaacson
Erica Zissman
Joyce Kelly

Winfred W. Kneisel
Norman MacDonald
Frank Maloney
Barbara Maloney
Roberta McCarthy
Peggy Nix
Chauncey Perry
Nancy Perry
John & Fiona Reardon
Bobby Robinson
Esther F. Seeley
Mary Selig
John Selig
Maria Sheehan
Joan M. Sheridan
Peter & Ellie Smerlas
Mary C. Spiers
Russ & Fran Stearns
Beth Hubley Thomson
Kate Tranquada
Eric Ward & Family

Fran's Fruit & Flowers
Phil Burke
Councilor Kathleen B. McMenimen
Professional Hearing Centers
Marcou Jewelers
Delaney & Delaney Attorneys at Law
James J. Hayes Oil Co., Inc.
Joyce Funeral Home
The Rotary Club of Waltham
Waltham High School Graphics Class
Fran's Flowers
Watertown Savings Bank
Gary Rogers, Realtor

“Thank you” to the Waltham Historical Society for preserving the City’s rich history.



As a proud member of the Waltham community for nearly 70 years, we look forward to serving the members of the Society.

Savings | Certificates
Free Checking | Free VISA® Debit Cards

Vehicle Loans | Personal Loans | VISA Credit Cards
Mortgages | Second Mortgages | Home Equity Loans

Free Online & Mobile Banking | Nationwide Branches

(781) 894-5090
FAX (781) 894-0579



FELTON STREET STUDIOS
Museum Quality
Custom Picture Framing

Robert Fitzgerald

72 FELTON ST
WALTHAM, MA 02453

Special Thanks go to the Members of Bentley University's Kappa Sigma fraternity.

600 Main St. | Waltham
781-736-9900 | rtn.org



EQUAL OPPORTUNITY
LENDER

Federally insured by NCUA



Relax.
It's Done.™

781-891-6700

merry maids

fast dependable service
auto • home • industry

PRIME GLASS and MIRROR
60 Arsenal St., Watertown, MA 02472

Larry Logan

Phone: (617) 924-9050
Fax: (617) 924-5182

www.prime-glass.com
email: primeglass101@aol.com

Looking for a reliable moving company?



BROOKLINE MOVING CO.
"Nothing but Service"

- » Moving
- » Storage*
- » Unpacking
- » Packing
- » Packing Supplies



*Ask about our 3 months of free storage offer

www.BrooklineMoving.com
Call 617.489.8090

CAFÉ ON THE COMMON

coffees, teas, & French pastries



The Lawrence Building • 677 Main Street
Waltham, Massachusetts
phone: 781-647-4019