

The Official Newsletter of

The Waltham
Historical Society
WALTHAM, MASSACHUSETTS

MARCH 2021



**DUE TO COVID-19
GUIDELINES AND
CONCERN FOR MEMBER
HEALTH AND SAFETY THIS
LECTURE WILL BE HELD
USING ZOOM**

Board of Directors
Term: 2019-2021

President
Wayne T. McCarthy

Vice-President
Sheila E. FitzPatrick

Treasurer
Marie Daly

Assistant Treasurer
Jack Cox

Recording Secretary
Janis Marchese

Corresponding Secretary
Jeremy Hagger

Curator
Vacant

Assistant Curator
Vacant

Membership
Gail Cormier

Board Members
Ruth M. Arena
Walter Beebe-Center
Joseph Connors
Dr. Helene Day
James Grenier
Ron Guertin
Morton Isaacson
Rachel Malley
Chauncy Perry
Al Smith
David Smith

The Weathervane is the official
publication of the
Waltham Historical Society
190 Moody Street
Waltham, Massachusetts 02453
781-891-5815
www.walthamhistoricalsociety.org

© Copyright 2021, all rights reserved
Membership in the Waltham Historical
Society includes subscription to this
newsletter among other rights and
privileges.

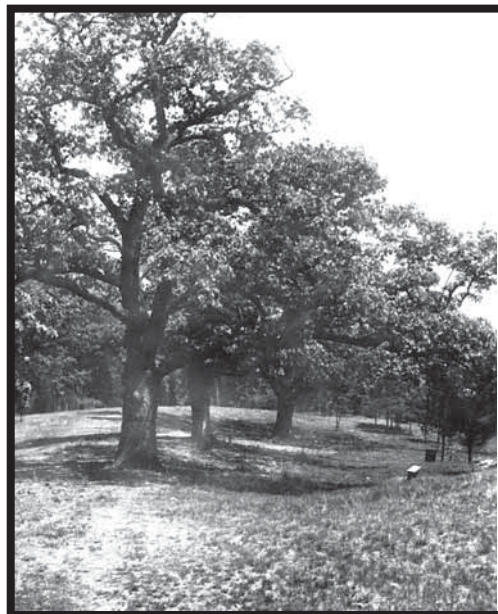
Articles and images submitted for publi-
cation, unless otherwise specified, become
the property of the Waltham Historical
Society. Authors submitting material
for publication are requested to sign
articles and include name, address, phone
number, e-mail if any, and release to print
images of any individuals depicted.



The Waltham Historical Society
In collaboration with
The Belmont Historical Society presents



The History of Beaver Brook Reservation, Belmont and Waltham, Massachusetts



By Waltham Historical Society Treasurer
Marie Daly

Tuesday, March 9, 2021
7:00 pm via Zoom
A Link Will Be Sent

The Beaver Brook Reservation is a 59-acre public park under the care and control of the Massachusetts Department of Conservation and Recreation. The reservation spans the border of Belmont and Waltham, and is divided into north and south sides by Trapelo Road. Not only was the reservation the first park established by the Metropolitan Park Commission (now the Massachusetts Department of Conservation and Recreation), it was the reason the park commission was founded. The public's appreciation of the beauty and natural aspects of the park sparked a movement to save the land from encroaching develop-

History of Beaver Brook Reservation, Belmont and Waltham, Massachusetts



Ballou's Pictorial, 1859

Continued from page 1

ment and for public enjoyment. The history of the park spans thousands of years from pre-contact settlements of indigenous people, to colonial water-powered industries, and to the landmark preservation initiative of the late nineteenth century. The lecture will describe the natural features of the park; outline the history of its land use; and review the ground-breaking efforts to save its beloved features.

*Image from Charles Eliot's
letter to the **Garden and
Forest** journal.*



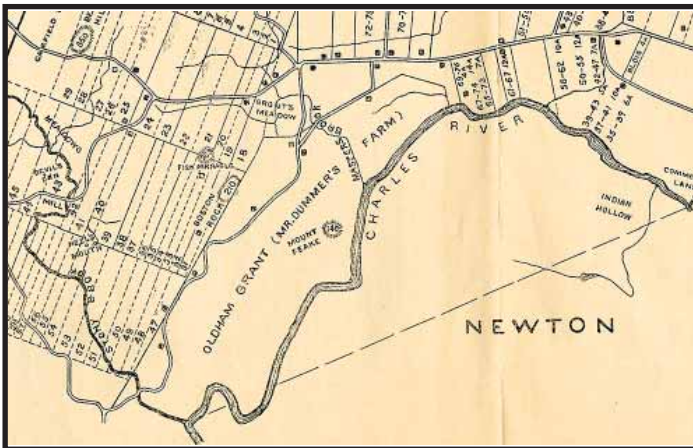
Tune us in! We now have a YouTube Channel!

That's right! Since we started holding and recording our Edmund L. Sanderson Lecture Series talks using Zoom, we're now able to make them available to watch again. The live presentations—a benefit of Membership in the Historical Society—allow attendees the opportunity for questions and answers of the speakers.

Currently on-line are the July 2020 lecture by Matthew Ahern, *Reverend Ripley's Prophecy: Samuel Ripley, His Son Ezra, and the Fight for Abolition*. The lecture was well received and has been viewed many times on YouTube. We appreciate the permission given by our speakers and look forward to making more available as we move forward.



Another lecture available is Mr. John Morrison's talk on *Survival: 1630-1635* in collaboration with the Partnerships of the Historic Bostons. This lecture explained the earliest days of the Puritan arrival, the establishment of a settlement at what is now Watertown, and the role of John Oldham in Waltham's history.



February's lecture by Marie Daly, *Everyday Life in 1913 Waltham* should be on-line by the time you receive this notice. Marie's talks are always informative and interesting and *Everyday Life* was no different. The talk was originally created as part of the Waltham Historical Society's celebration of its 100th Anniversary in 2013. It is as relevant today as it was in 2013. Since its first presentation, Marie conducted more research and has added to the original with more information and images.

It is our plan to create video presentations of our exhibits, giving those living at a distance the opportunity to see what we're creating here in Waltham.

Use the QR code on the right and visit our channel and view our growing Library of offerings.



NOMINATIONS FOR OFFICERS TO SERVE FOR THE 2021-23 TERM WILL CLOSE AT OUR MARCH 9, 2021 MEETING

ELECTIONS WILL BE HELD AT OUR MAY MEETING



THE NELSON COMPANIES®
 Commercial Real Estate Services Since 1977
 Development
 Construction • Brokerage
 Facilities/Property Management
 Maintenance and Repairs
 75 Third Avenue, Waltham, MA 02451
 ☎ 781.890.7600 ☎ 781.890.9737 www.thenelsoncompanies.com

Welcome to The Waltham Historical Society!

The Nelson Companies has recently joined the Historical Society at the Corporate Level. Long a strong supporter of Waltham's history, Doug Waybright, President of the Nelson Companies is assisting us in sharing more about Mr. Arthur Nelson. Mr. Nelson ceaselessly promoted the significance of innovation as a hallmark of Waltham's history.

Help the Waltham Historical Society & the Environment

Every time you purchase a

GIVE BACK WHERE IT COUNTS

Star Market Bag during the Month of March
The Waltham Historical Society will receive

\$1



star
 Pick Up Your Reusable Bag Today!

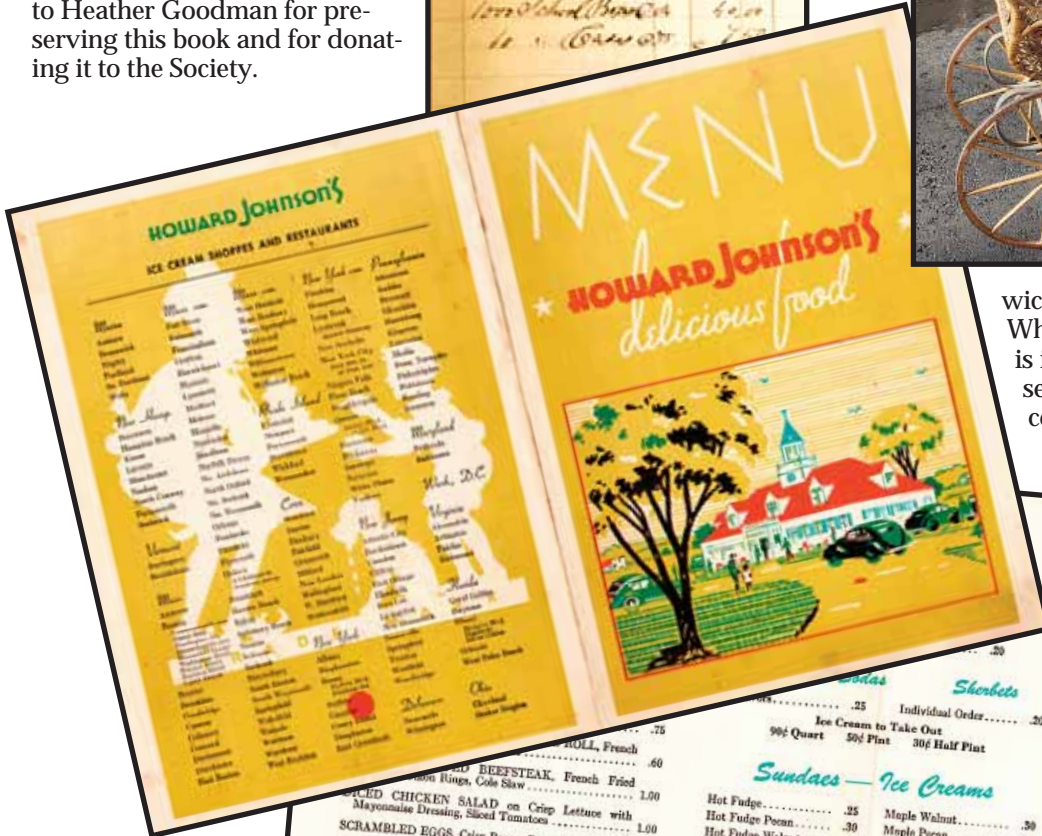
Some recent donations to the Society have included an account book of the Parmenter and White company. With entries beginning in 1836 and running through 1875 the entries show a consistent growth in business over the years. We are grateful to Heather Goodman for preserving this book and for donating it to the Society.



And Suzanne Whitcomb Hayes donated a few more items that included a 19th century



wicker baby carriage from Warren Whitcomb's childhood. This carriage is in superb condition and gives a real sense of the importance placed upon conveying infants in the 1800s.



From the donation by the family of James A. True is a menu from Howard Johnson's restaurant at the corner of Main and Warren Streets.

Sandwiches	
HOWARD JOHNSON'S GRILLED FRANKFORT on Toasted Roll	.25
SLICED CHICKEN	.45
TUNA FISH SALAD	.45
GRILLED HAMBURG STEAK ROLL	.25
GRILLED HAMBURG AND CHEESE on Toasted Roll	.35
AMERICAN CHEESE	.25
AMERICAN CHEESE AND HAM	.40
FRIED EGG	.30
FRIED EGG WITH BACON OR HAM	.40
BACON, LETTUCE AND TOMATO	.35
CHICKEN SALAD	.60
CREAM CHEESE AND JELLY OR OLIVE	.25
EGG SALAD	.25
HAM SALAD	.25
SLICED TOMATO, LETTUCE, MAYONNAISE	.30
SARDINE	.25
SALMON SALAD	.35
SALMON SALAD ROLL	.45
SWISS CHEESE AND HAM	.35
TOASTED CLAM ROLL	.50
SLICED HAM	.30
SWISS CHEESE	.30
PEANUT BUTTER AND BACON	.25
WESTERN	.25
CHOP SUEY on Toasted Roll	.35

Desserts	
APPLE PIE 20 A LA MODE	.30
HOWARD JOHNSON'S ICE CREAM CAKE	.40
FUDGE CAKE 15 A LA MODE	.25
ICE CREAM OR SHERBET	.20
FRUIT CUP	.20
GELATIN, WHIPPED CREAM	.25
HOWARD JOHNSON'S BROWNIE	.15

Beverages	
Cap of Coffee	.10
Hot Chocolate	.15
Milk (Individual)	.10
Buttermilk	.10
Gingerale	.10
Ice Tea	.15
Tea	.10
Tomato Juice	.15
Orange Juice	.20
V-8 Cocktail	.15
Grape Fruit Juice	.15
Ice Coffee	.15

Sundaes - Ice Creams	
Hot Fudge	.25
Hot Fudge Pecan	.30
Hot Fudge Walnut	.30
Hot Fudge M. M.	.30
Coffee Fudge	.25
Coffee Fudge Pecan	.30
Coffee Fudge Walnut	.30
Coffee Fudge M. M.	.30
Strawberry (fresh fruit)	.30
Strawberry	.25
Cherry Whip	.30
Chocolate Walnut	.30
Chocolate M. M.	.30
Maple Walnut	.30
Maple Pecan	.30
Maple M. M.	.30
Coffee Maple	.25
Coffee Maple M. M.	.30
Pineapple Whip	.30
Johnnyc Special	.40
Banano Royal	.25
Hot Butterscotch	.25
Hot Butterscotch Pecan	.30
Hot Butterscotch M. M.	.30

Egg, Milk and Fresh Fruit Drinks	
Milk (Individual)	.10
Milk Shake (All Flavors)	.30
Milk Shake (All Flavors)	.20
Floats (All Flavors)	.25
Orangeade (Fresh)	.30
Frappes (All Flavors)	.25
Orangeade with Sherbet	.40
Egg Shake (All Flavors)	.30
Malted Milk	.25
Orangeade (Fresh)	.30
Egg Malted Milk (All Flavors)	.35
Egg Nog	.30

Ice Cream to Take Out	
90¢ Quart	.25
50¢ Pint	.20
30¢ Half Pint	.15

Fried Clams to take out	
French Fried Potatoes to take out	55¢, 95¢
	35¢, 55¢